



## Ron Smith & Associates, Inc.

### Testing Division

[www.RonSmithandAssociates.com](http://www.RonSmithandAssociates.com) | [testing@ronsmithandassociates.com](mailto:testing@ronsmithandassociates.com)

---

## Summary Report

CS Latent Print Processing Proficiency Test #23620LPP  
Issued: October 10, 2023

On July 17, 2023, Ron Smith and Associates, Inc. (RS&A) shipped the CS Latent Print Processing Proficiency Test #23620LPP. Participants were required to submit their responses no later than August 25, 2023 in order for them to be included in this summary report.

A total of 91 tests were ordered and shipped, with 85 participants returning their responses. **This summary report is based on 255 individual responses (85 participants returning 3 responses each).** The test included three items for latent print processing.

The results presented in this report reflect whether or not the participants' submitted results agree or disagree with the assigned values garnered from pre-distribution testing and outlined in ***The Manufacturer's Report*** (Appendix 1). The primary purpose of a Summary Report is to provide an overall documentation of all the submitted responses. It is RS&A's intention to go a step further by providing more meaningful statistical results through analyzing the submitted responses in relation to the demographics obtained from each of the analysts participating in this proficiency test. All results and statistics for this test will be outlined through graphs and charts found in the remainder of this report.

Prior to distribution of this test, all the expected responses were determined, by internal and external consensus, to be either "Friction Ridge Detail **was** Developed" or "Friction Ridge Detail **was not** Developed". In designing this proficiency test, it is understood that sometimes friction ridge detail may be present on an item during the manufacturing process. For this reason, all items are cleaned prior to being included in a test. Because of the latent nature of the prints, it is possible that some portions of friction ridge detail can be missed in the cleaning process. To satisfy this condition for the test, all developed friction ridge detail has to be photographed in order to be given credit. If the photograph is accepted, the participant will be given credit for the friction ridge development in instances when the expected answer was "Friction Ridge Detail **was not** Developed".

RS&A strives to maintain the confidentiality of all of its clients and participants. All results are obtained and published using randomly generated test codes. RS&A will not release the identity of any participant without the written consent of the participant and/or the agency involved.

For any questions or further information, please contact our Proficiency Testing Coordinator by emailing [testing@ronsmithandassociates.com](mailto:testing@ronsmithandassociates.com) or by calling toll free at 1-866-832-6772.

# Appendix 1

## **Test Manufacturer's Information** **CS Latent Print Processing Proficiency Test #23620LPP**

This proficiency test consisted of three items labeled as Item #1 (Chapstick), Item #2 (Hand Sanitizer) and Item #3 (Red Cup). The items were similar to those normally encountered in crime scene latent print processing. The participant was required to process the items for the presence or absence of friction ridge detail. The assigned values are as follows:

<b>Item #</b>	<b>Assigned Value</b>
Item #1(Chapstick)	Friction Ridge Detail <b><u>Was Not</u></b> Developed
Item #2 (Hand Sanitizer)	Friction Ridge Detail <b><u>Was</u></b> Developed and Supported with Electronically Captured Image
Item #3 (Red Cup)	Friction Ridge Detail <b><u>Was</u></b> Developed and Supported with Electronically Captured Image

The assigned values below were determined through the ground truth information and verified through unanimous agreement during pre-distribution testing.

**Known Matrix used:**

**Item 1:** N/A, **Item 2:** Sebaceous oils, **Item 3:** Sebaceous oils

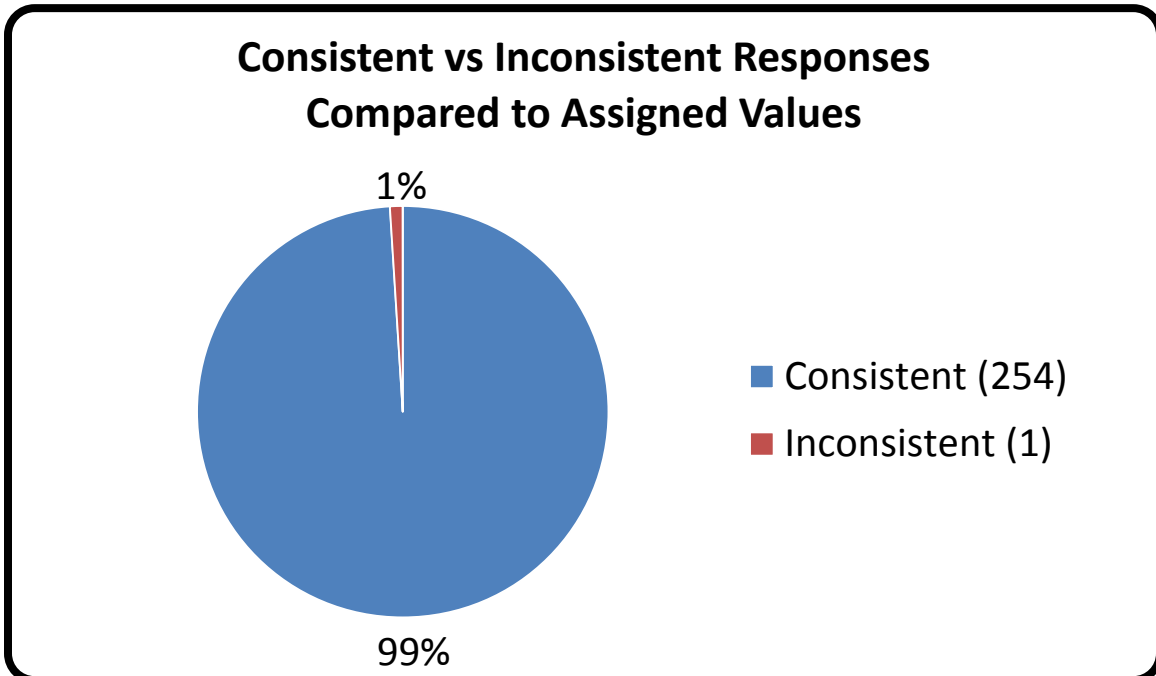
Individual reports will be provided to participants by late September 2023. The final summary report for this test will be posted on the Ron Smith and Associates website by early October 2023 using the following link: <http://www.ronsmithandassociates.com/proficiency/crimesceneprocessing.html>

It is recommended to postpone evaluating an individual's performance until after you have received the statistical averages contained in the summary report.

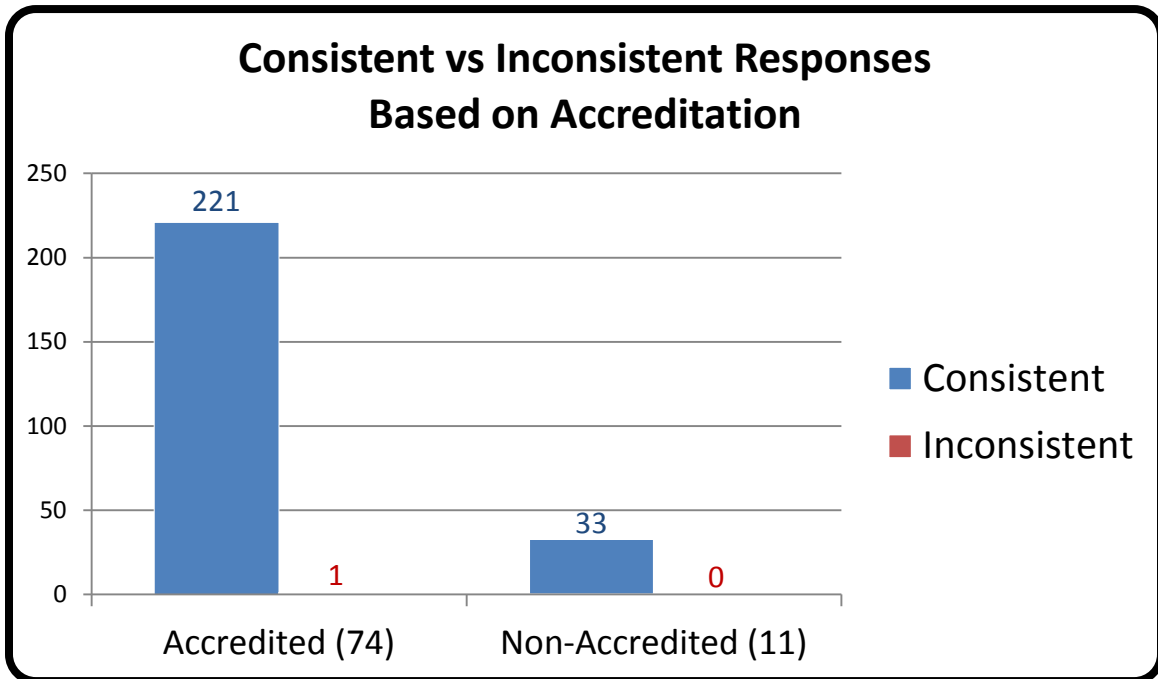
For any questions or further information, contact the Proficiency Testing Coordinator by emailing [testing@ronsmithandassociates.com](mailto:testing@ronsmithandassociates.com) or call toll free at 1-866-832-6772.

**Authorized by:** Jon S. Byrd, CEO  
**Issue Date:** September 1, 2023

## Appendix 2



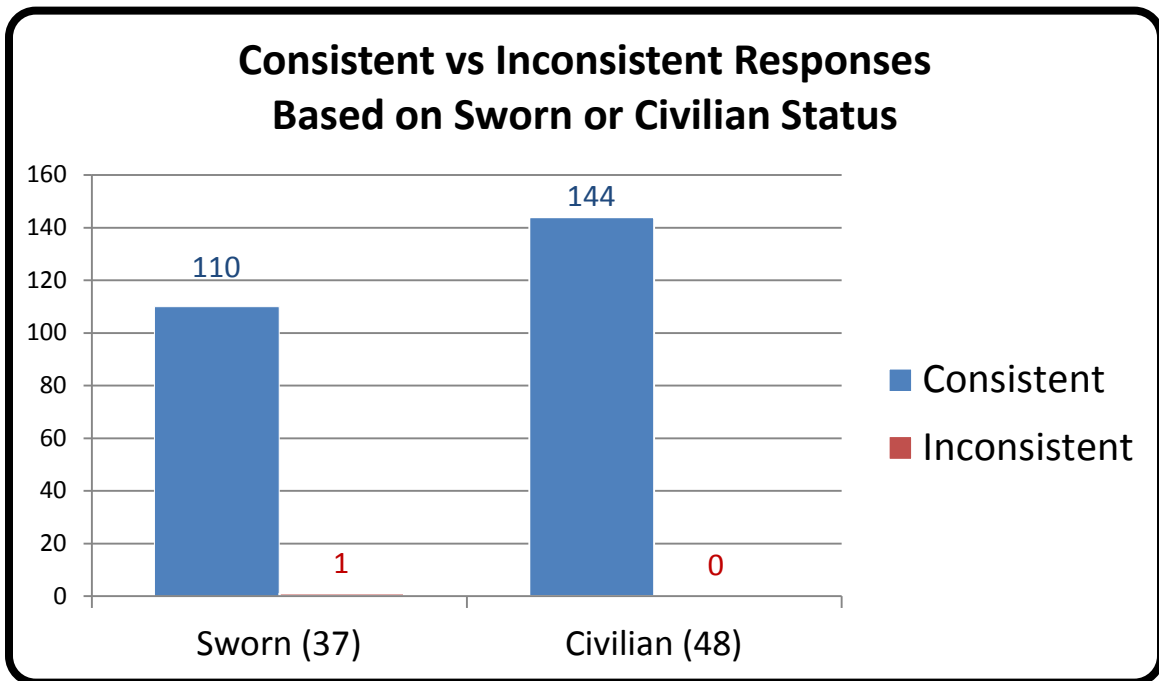
## Appendix 3



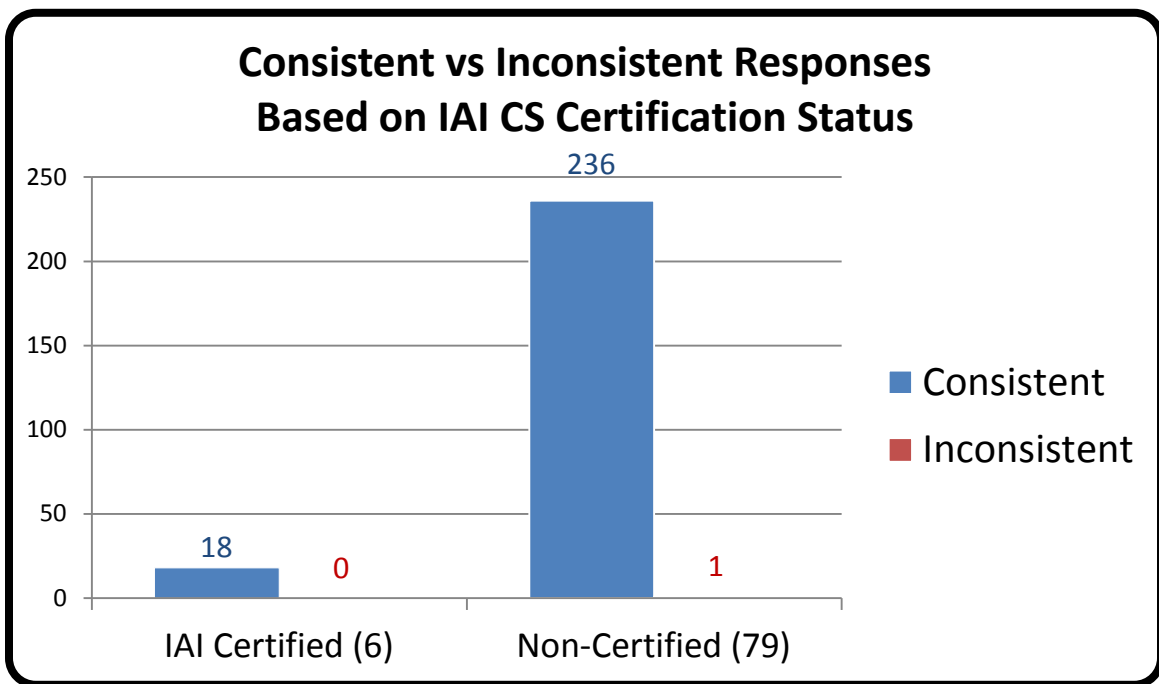
\*Numerical values shown are based on 85 participant submissions, each with 3 responses, equaling 255 total responses.

\*For further information, please read *Manufacturer's Additional Observations* on the final page of this report.

## Appendix 4



## Appendix 5

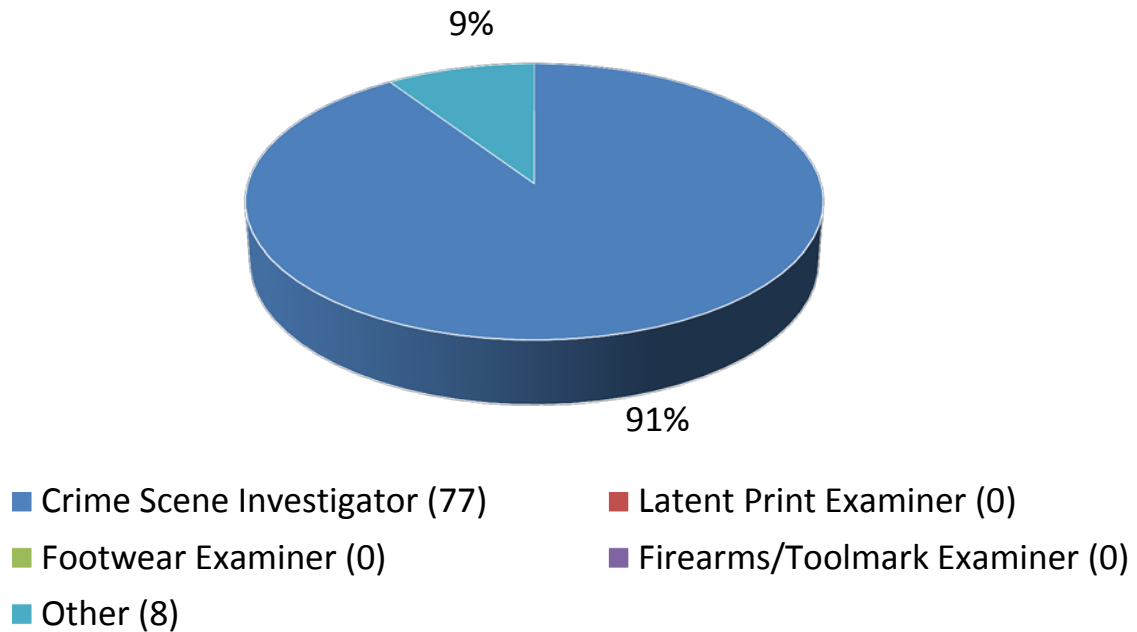


\*Numerical values shown are based on 85 participant submissions, each with 3 responses, equaling 255 total responses.

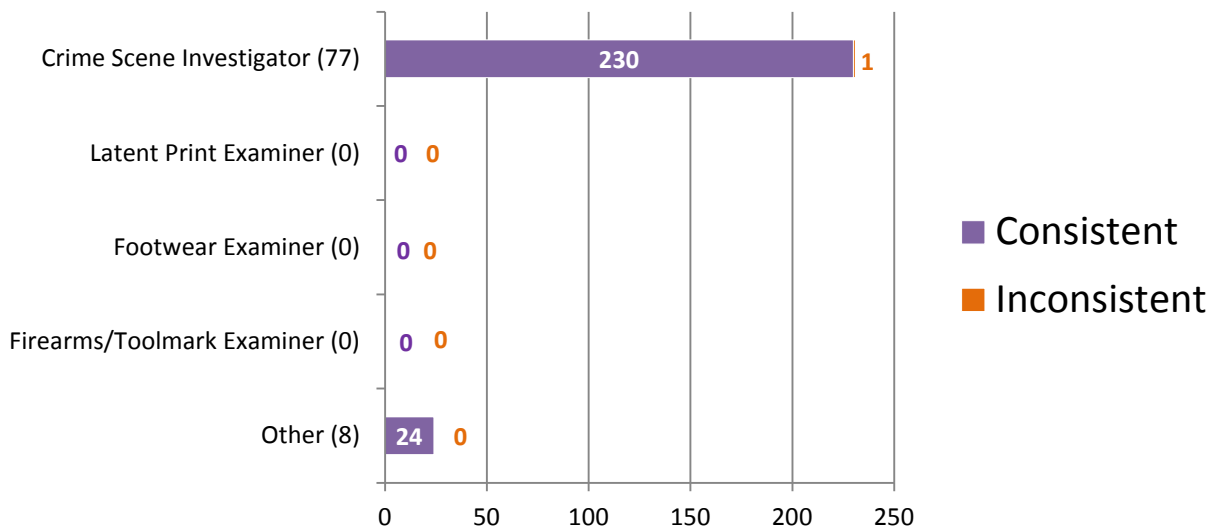
\*For further information, please read *Manufacturer's Additional Observations* on the final page of this report.

## Appendix 6

### Percentage of Participants Based on Primary Job Position



### Consistent vs Inconsistent Responses Based on Primary Job Position

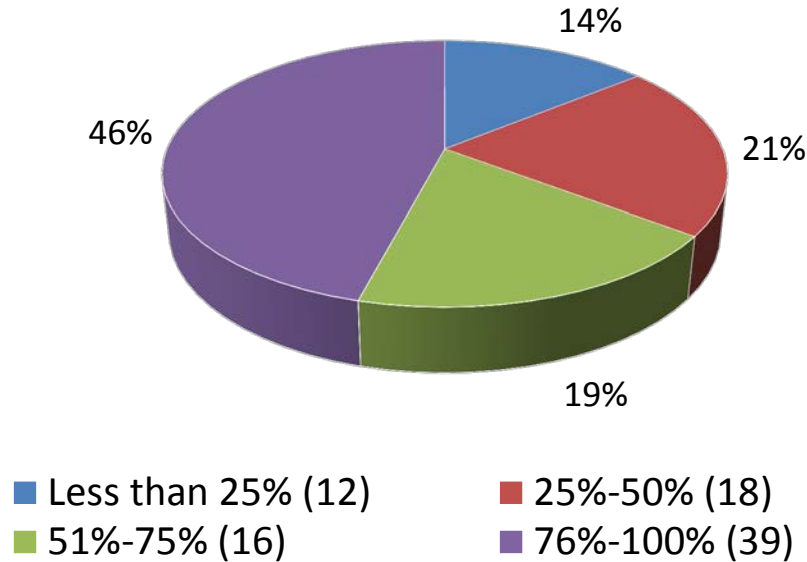


\*Numerical values shown are based on **85 participant submissions, each with 3 responses, equaling 255 total responses.**

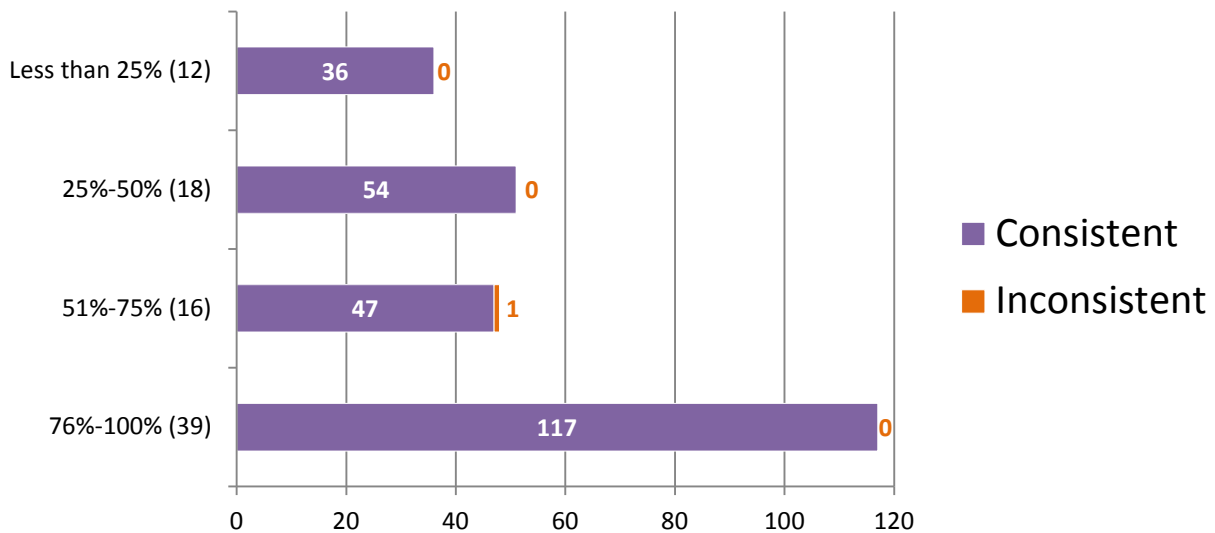
\*For further information, please read **Manufacturer's Additional Observations** on the final page of this report.

## Appendix 7

### Percentage of Participants Based on Time Devoted to Processing of Crime Scenes



### Consistent vs Inconsistent Responses Based on Time Devoted to Processing of Crime Scenes

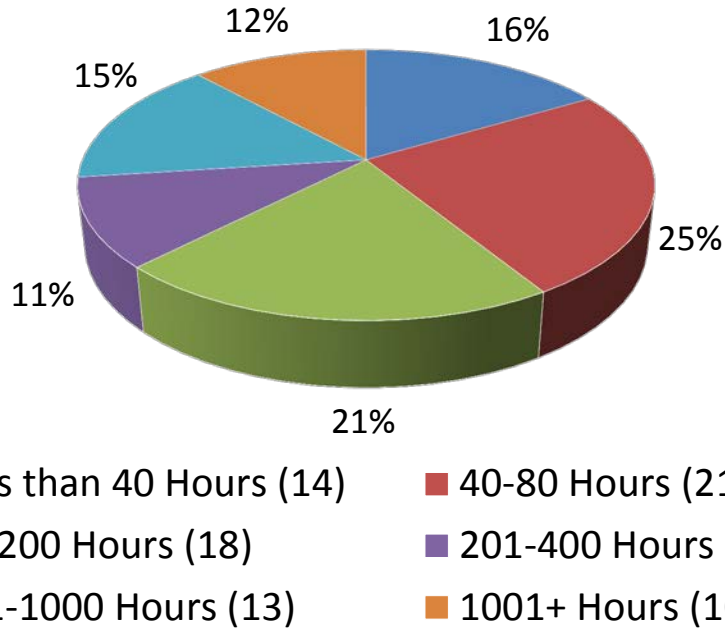


\*Numerical values shown are based on **85 participant submissions, each with 3 responses, equaling 255 total responses.**

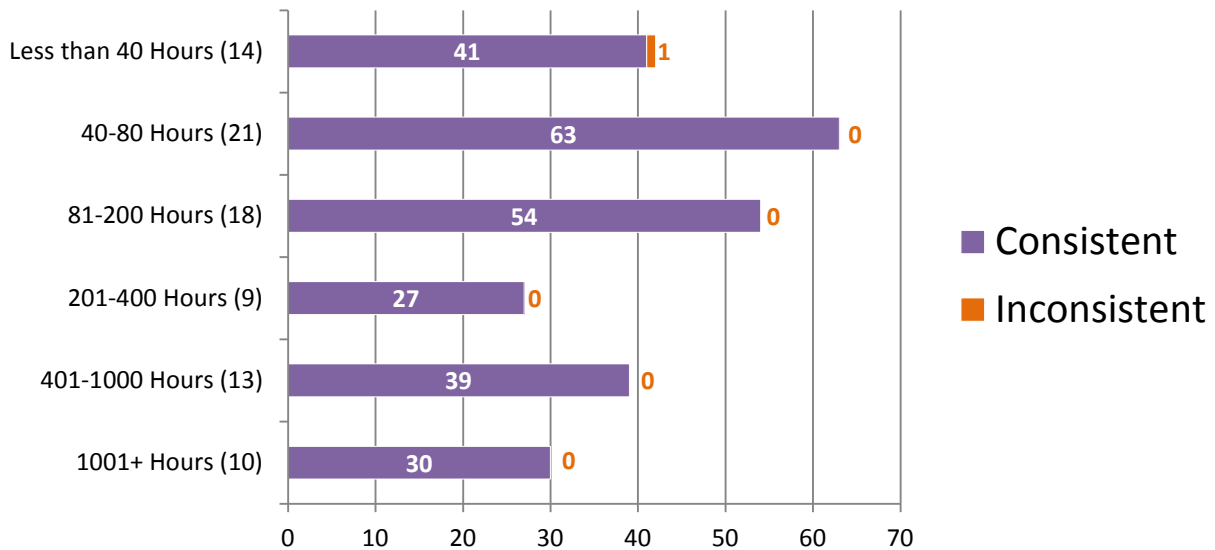
\*For further information, please read ***Manufacturer's Additional Observations*** on the final page of this report.

## Appendix 8

### Percentage of Participants Based on Hours of Formal Crime Scene Training Completed



### Consistent vs Inconsistent Responses Based on Hours of Formal Crime Scene Training Completed

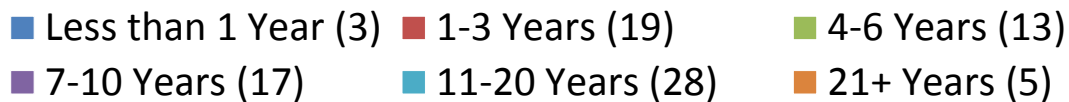
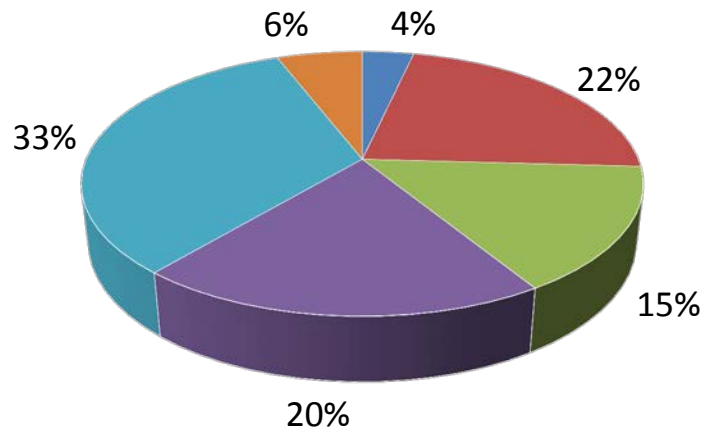


\*Numerical values shown are based on **85 participant submissions, each with 3 responses, equaling 255 total responses.**

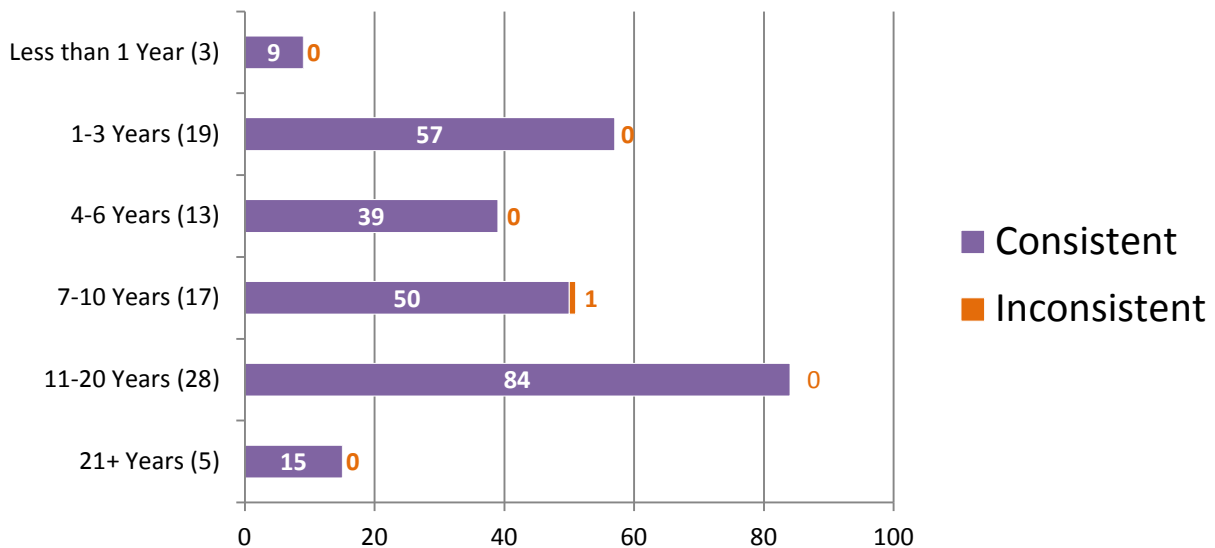
\*For further information, please read **Manufacturer's Additional Observations** on the final page of this report.

## Appendix 9

### Percentage of Participants Based on Years of Experience in Crime Scene Processing



### Consistent vs Inconsistent Responses Based on Years of Experience in CS Processing



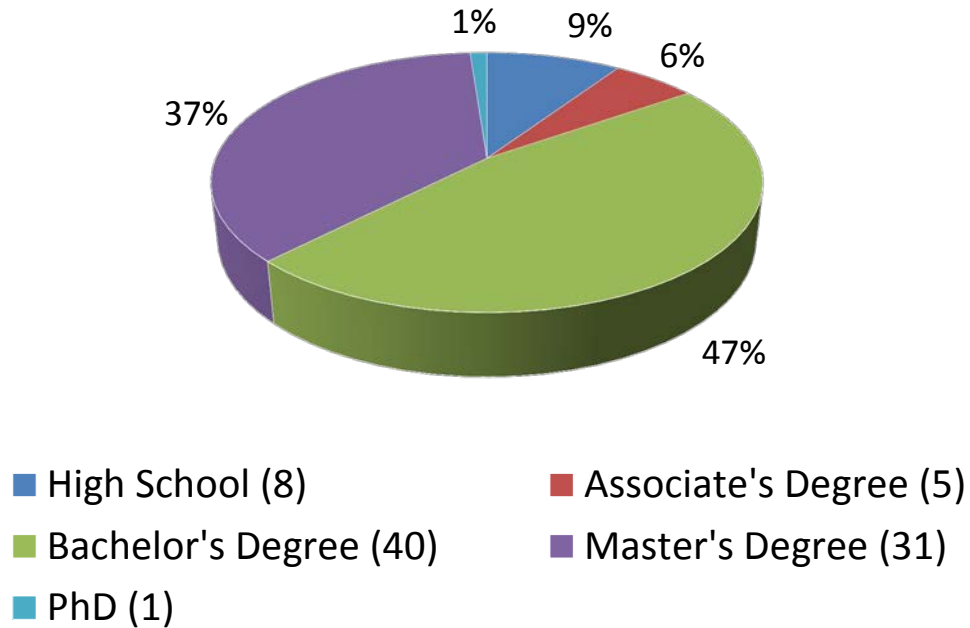
\* Numerical values shown are based on **85 participant submissions, each with 3 responses, equaling 255 total responses.**

\* For further information, please read *Manufacturer's Additional Observations* on the final page of this report.

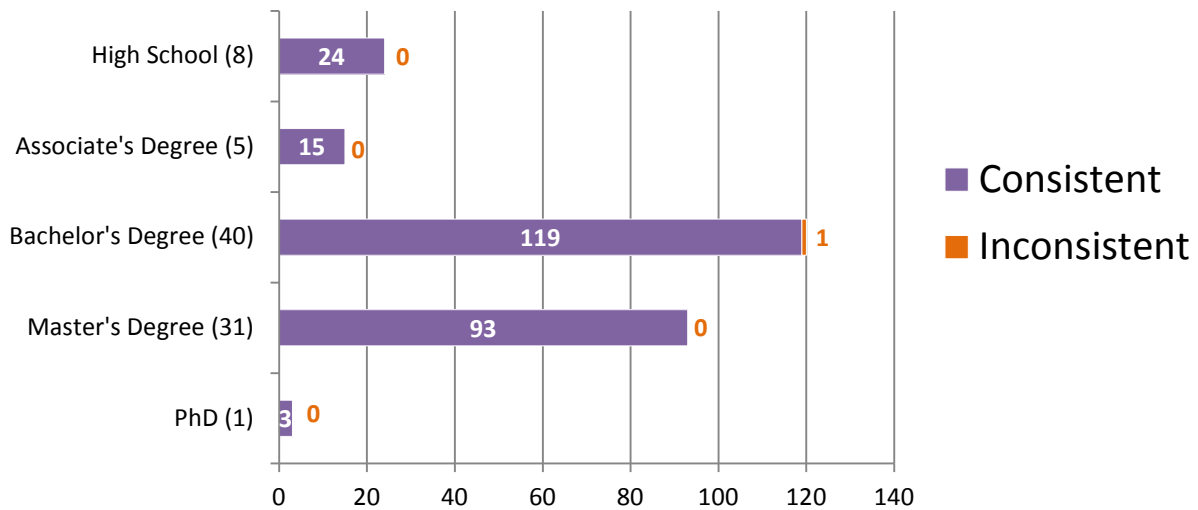


## Appendix 10

### Percentage of Participants Based on Highest Level of Education Completed



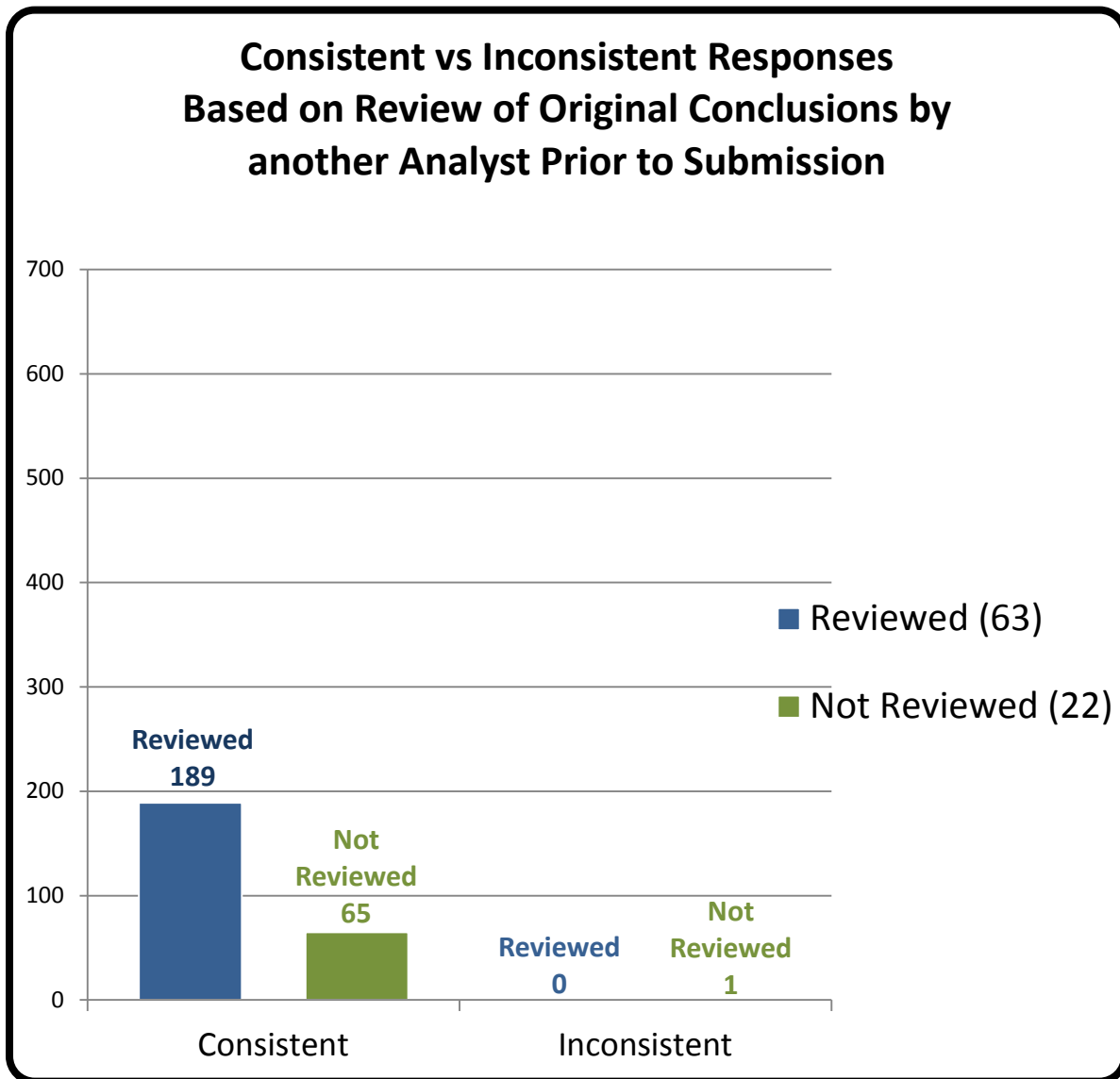
### Consistent vs Inconsistent Responses Based on Highest Level of Education Completed



\*\*Numerical values shown are based on **85 participant submissions, each with 3 responses, equaling 255 total responses.**

\*For further information, please read *Manufacturer's Additional Observations* on the final page of this report.

## Appendix 11



\*Numerical values shown are based on **85 participant submissions, each with 3 responses, equaling 255 total responses.**

\*For further information, please read **Manufacturer's Additional Observations** on the final page of this report.

## Appendix 12

### Participant Responses Listed by Test Code

Item #	Item #1	Item #2	Item #3
<b>Assigned Values</b>	<b>Friction Ridge Detail <u>Was Not</u> Developed</b>	<b>Friction Ridge Detail <u>Was</u> Developed – See Electronically Captured Image</b>	<b>Friction Ridge Detail <u>Was</u> Developed – See Electronically Captured Image</b>
<b>Test Code</b>	<b>7859J23620LPP</b>	Friction Ridge Detail <u>Was Not</u> Developed	Friction Ridge Detail <u>Was</u> Developed – See Electronically Captured Image
	<b>4071H23620LPP</b>	Friction Ridge Detail <u>Was Not</u> Developed	Friction Ridge Detail <u>Was</u> Developed – See Electronically Captured Image
	<b>5332Q23620LPP</b>	Friction Ridge Detail <u>Was Not</u> Developed	Friction Ridge Detail <u>Was</u> Developed – See Electronically Captured Image
	<b>9936H23620LPP</b>	Friction Ridge Detail <u>Was Not</u> Developed	Friction Ridge Detail <u>Was</u> Developed – See Electronically Captured Image
	<b>8556F23620LPP</b>	Friction Ridge Detail <u>Was Not</u> Developed	Friction Ridge Detail <u>Was</u> Developed – See Electronically Captured Image
	<b>5777J23620LPP</b>	Friction Ridge Detail <u>Was Not</u> Developed	Friction Ridge Detail <u>Was</u> Developed – See Electronically Captured Image
	<b>2807X23620LPP</b>	Friction Ridge Detail <u>Was Not</u> Developed	Friction Ridge Detail <u>Was</u> Developed – See Electronically Captured Image
	<b>9414R23620LPP</b>	Friction Ridge Detail <u>Was Not</u> Developed	Friction Ridge Detail <u>Was</u> Developed – See Electronically Captured Image
	<b>1038M23620LPP</b>	Friction Ridge Detail <u>Was Not</u> Developed	Friction Ridge Detail <u>Was</u> Developed – See Electronically Captured Image

	<b>6250Y23620LPP</b>	Friction Ridge Detail <b><u>Was Not</u></b> Developed	Friction Ridge Detail <b><u>Was</u></b> Developed – See Electronically Captured Image	Friction Ridge Detail <b><u>Was</u></b> Developed – See Electronically Captured Image
	<b>1313E23620LPP</b>	Friction Ridge Detail <b><u>Was Not</u></b> Developed	Friction Ridge Detail <b><u>Was</u></b> Developed – See Electronically Captured Image	Friction Ridge Detail <b><u>Was</u></b> Developed – See Electronically Captured Image
	<b>6294I23620LPP</b>	Friction Ridge Detail <b><u>Was Not</u></b> Developed	Friction Ridge Detail <b><u>Was</u></b> Developed – See Electronically Captured Image	Friction Ridge Detail <b><u>Was</u></b> Developed – See Electronically Captured Image
	<b>4675E23620LPP</b>	Friction Ridge Detail <b><u>Was Not</u></b> Developed	Friction Ridge Detail <b><u>Was</u></b> Developed – See Electronically Captured Image	Friction Ridge Detail <b><u>Was</u></b> Developed – See Electronically Captured Image
	<b>3368Y23620LPP</b>	Friction Ridge Detail <b><u>Was Not</u></b> Developed	Friction Ridge Detail <b><u>Was</u></b> Developed – See Electronically Captured Image	Friction Ridge Detail <b><u>Was</u></b> Developed – See Electronically Captured Image
	<b>9041W23620LPP</b>	Friction Ridge Detail <b><u>Was Not</u></b> Developed	Friction Ridge Detail <b><u>Was</u></b> Developed – See Electronically Captured Image	Friction Ridge Detail <b><u>Was</u></b> Developed – See Electronically Captured Image
	<b>2836T23620LPP</b>	Friction Ridge Detail <b><u>Was Not</u></b> Developed	Friction Ridge Detail <b><u>Was</u></b> Developed – See Electronically Captured Image	Friction Ridge Detail <b><u>Was</u></b> Developed – See Electronically Captured Image
	<b>5541K23620LPP</b>	Friction Ridge Detail <b><u>Was Not</u></b> Developed	Friction Ridge Detail <b><u>Was</u></b> Developed – See Electronically Captured Image	Friction Ridge Detail <b><u>Was</u></b> Developed – See Electronically Captured Image
	<b>4642B23620LPP</b>	Friction Ridge Detail <b><u>Was Not</u></b> Developed	Friction Ridge Detail <b><u>Was</u></b> Developed – See Electronically Captured Image	Friction Ridge Detail <b><u>Was</u></b> Developed – See Electronically Captured Image
	<b>3747I23620LPP</b>	Friction Ridge Detail <b><u>Was Not</u></b> Developed	Friction Ridge Detail <b><u>Was</u></b> Developed – See Electronically Captured Image	Friction Ridge Detail <b><u>Was</u></b> Developed – See Electronically Captured Image
	<b>3731V23620LPP</b>	Friction Ridge Detail <b><u>Was Not</u></b> Developed	Friction Ridge Detail <b><u>Was</u></b> Developed – See Electronically Captured Image	Friction Ridge Detail <b><u>Was</u></b> Developed – See Electronically Captured Image
	<b>7197R23620LPP</b>	Friction Ridge Detail <b><u>Was Not</u></b> Developed	Friction Ridge Detail <b><u>Was</u></b> Developed – See Electronically Captured Image	Friction Ridge Detail <b><u>Was</u></b> Developed – See Electronically Captured Image

	<b>2857D23620LPP</b>	Friction Ridge Detail <b><u>Was Not</u></b> Developed	Friction Ridge Detail <b><u>Was</u></b> Developed – See Electronically Captured Image	Friction Ridge Detail <b><u>Was</u></b> Developed – See Electronically Captured Image
	<b>2635F23620LPP</b>	Friction Ridge Detail <b><u>Was Not</u></b> Developed	Friction Ridge Detail <b><u>Was</u></b> Developed – See Electronically Captured Image	Friction Ridge Detail <b><u>Was</u></b> Developed – See Electronically Captured Image
	<b>5245C23620LPP</b>	Friction Ridge Detail <b><u>Was Not</u></b> Developed	Friction Ridge Detail <b><u>Was</u></b> Developed – See Electronically Captured Image	Friction Ridge Detail <b><u>Was</u></b> Developed – See Electronically Captured Image
	<b>488Y23620LPP</b>	Friction Ridge Detail <b><u>Was Not</u></b> Developed	Friction Ridge Detail <b><u>Was</u></b> Developed – See Electronically Captured Image	Friction Ridge Detail <b><u>Was</u></b> Developed – See Electronically Captured Image
	<b>567W23620LPP</b>	Friction Ridge Detail <b><u>Was Not</u></b> Developed	Friction Ridge Detail <b><u>Was</u></b> Developed – See Electronically Captured Image	Friction Ridge Detail <b><u>Was</u></b> Developed – See Electronically Captured Image
	<b>5476X23620LPP</b>	Friction Ridge Detail <b><u>Was Not</u></b> Developed	Friction Ridge Detail <b><u>Was</u></b> Developed – See Electronically Captured Image	Friction Ridge Detail <b><u>Was</u></b> Developed – See Electronically Captured Image
	<b>4885C23620LPP</b>	Friction Ridge Detail <b><u>Was Not</u></b> Developed	Friction Ridge Detail <b><u>Was</u></b> Developed – See Electronically Captured Image	Friction Ridge Detail <b><u>Was</u></b> Developed – See Electronically Captured Image
	<b>2984Y23620LPP</b>	Friction Ridge Detail <b><u>Was Not</u></b> Developed	Friction Ridge Detail <b><u>Was</u></b> Developed – See Electronically Captured Image	Friction Ridge Detail <b><u>Was</u></b> Developed – See Electronically Captured Image
	<b>8089X23620LPP</b>	Friction Ridge Detail <b><u>Was Not</u></b> Developed	Friction Ridge Detail <b><u>Was</u></b> Developed – See Electronically Captured Image	Friction Ridge Detail <b><u>Was</u></b> Developed – See Electronically Captured Image
	<b>214R23620LPP</b>	Friction Ridge Detail <b><u>Was Not</u></b> Developed	Friction Ridge Detail <b><u>Was</u></b> Developed – See Electronically Captured Image	Friction Ridge Detail <b><u>Was</u></b> Developed – See Electronically Captured Image
	<b>2826E23620LPP</b>	Friction Ridge Detail <b><u>Was Not</u></b> Developed	Friction Ridge Detail <b><u>Was</u></b> Developed – See Electronically Captured Image	Friction Ridge Detail <b><u>Was</u></b> Developed – See Electronically Captured Image
	<b>8643X23620LPP</b>	Friction Ridge Detail <b><u>Was Not</u></b> Developed	Friction Ridge Detail <b><u>Was</u></b> Developed – See Electronically Captured Image	Friction Ridge Detail <b><u>Was</u></b> Developed – See Electronically Captured Image

	<b>3256L23620LPP</b>	Friction Ridge Detail <b><u>Was Not</u></b> Developed	Friction Ridge Detail <b><u>Was</u></b> Developed – See Electronically Captured Image	Friction Ridge Detail <b><u>Was</u></b> Developed – See Electronically Captured Image
	<b>6133V23620LPP</b>	Friction Ridge Detail <b><u>Was Not</u></b> Developed	Friction Ridge Detail <b><u>Was</u></b> Developed – See Electronically Captured Image	Friction Ridge Detail <b><u>Was</u></b> Developed – See Electronically Captured Image
	<b>8900R23620LPP</b>	Friction Ridge Detail <b><u>Was Not</u></b> Developed	Friction Ridge Detail <b><u>Was</u></b> Developed – See Electronically Captured Image	Friction Ridge Detail <b><u>Was</u></b> Developed – See Electronically Captured Image
	<b>4296B23620LPP</b>	Friction Ridge Detail <b><u>Was Not</u></b> Developed	Friction Ridge Detail <b><u>Was</u></b> Developed – See Electronically Captured Image	Friction Ridge Detail <b><u>Was</u></b> Developed – See Electronically Captured Image
	<b>2394Q23620LPP</b>	Friction Ridge Detail <b><u>Was Not</u></b> Developed	Friction Ridge Detail <b><u>Was</u></b> Developed – See Electronically Captured Image	Friction Ridge Detail <b><u>Was</u></b> Developed – See Electronically Captured Image
	<b>6989K23620LPP</b>	Friction Ridge Detail <b><u>Was Not</u></b> Developed	Friction Ridge Detail <b><u>Was</u></b> Developed – See Electronically Captured Image	Friction Ridge Detail <b><u>Was</u></b> Developed – See Electronically Captured Image
	<b>6148K23620LPP</b>	Friction Ridge Detail <b><u>Was Not</u></b> Developed	Friction Ridge Detail <b><u>Was</u></b> Developed – See Electronically Captured Image	Friction Ridge Detail <b><u>Was</u></b> Developed – See Electronically Captured Image
	<b>5102G23620LPP</b>	Friction Ridge Detail <b><u>Was Not</u></b> Developed	Friction Ridge Detail <b><u>Was</u></b> Developed – See Electronically Captured Image	Friction Ridge Detail <b><u>Was</u></b> Developed – See Electronically Captured Image
	<b>5027K23620LPP</b>	Friction Ridge Detail <b><u>Was Not</u></b> Developed	Friction Ridge Detail <b><u>Was</u></b> Developed – See Electronically Captured Image	Friction Ridge Detail <b><u>Was</u></b> Developed – See Electronically Captured Image
	<b>1167F23620LPP</b>	Friction Ridge Detail <b><u>Was Not</u></b> Developed	Friction Ridge Detail <b><u>Was</u></b> Developed – See Electronically Captured Image	Friction Ridge Detail <b><u>Was</u></b> Developed – See Electronically Captured Image
	<b>9881D23620LPP</b>	Friction Ridge Detail <b><u>Was Not</u></b> Developed	Friction Ridge Detail <b><u>Was</u></b> Developed – See Electronically Captured Image	Friction Ridge Detail <b><u>Was</u></b> Developed – See Electronically Captured Image
	<b>8772L23620LPP</b>	Friction Ridge Detail <b><u>Was Not</u></b> Developed	Friction Ridge Detail <b><u>Was</u></b> Developed – See Electronically Captured Image	Friction Ridge Detail <b><u>Was</u></b> Developed – See Electronically Captured Image

	<b>6968B23620LPP</b>	Friction Ridge Detail <b><u>Was Not</u></b> Developed	Friction Ridge Detail <b><u>Was</u></b> Developed – See Electronically Captured Image	Friction Ridge Detail <b><u>Was</u></b> Developed – See Electronically Captured Image
	<b>5568J23620LPP</b>	Friction Ridge Detail <b><u>Was Not</u></b> Developed	Friction Ridge Detail <b><u>Was</u></b> Developed – See Electronically Captured Image	Friction Ridge Detail <b><u>Was</u></b> Developed – See Electronically Captured Image
	<b>5540H23620LPP</b>	Friction Ridge Detail <b><u>Was Not</u></b> Developed	Friction Ridge Detail <b><u>Was</u></b> Developed – See Electronically Captured Image	Friction Ridge Detail <b><u>Was</u></b> Developed – See Electronically Captured Image
	<b>3487J23620LPP</b>	Friction Ridge Detail <b><u>Was Not</u></b> Developed	Friction Ridge Detail <b><u>Was</u></b> Developed – See Electronically Captured Image	Friction Ridge Detail <b><u>Was</u></b> Developed – See Electronically Captured Image
	<b>4274G23620LPP</b>	Friction Ridge Detail <b><u>Was Not</u></b> Developed	Friction Ridge Detail <b><u>Was</u></b> Developed – See Electronically Captured Image	Friction Ridge Detail <b><u>Was</u></b> Developed – See Electronically Captured Image
	<b>807X23620LPP</b>	Friction Ridge Detail <b><u>Was Not</u></b> Developed	Friction Ridge Detail <b><u>Was</u></b> Developed – See Electronically Captured Image	Friction Ridge Detail <b><u>Was</u></b> Developed – See Electronically Captured Image
	<b>2947R23620LPP</b>	Friction Ridge Detail <b><u>Was Not</u></b> Developed	Friction Ridge Detail <b><u>Was</u></b> Developed – See Electronically Captured Image	Friction Ridge Detail <b><u>Was</u></b> Developed – See Electronically Captured Image
	<b>8797X23620LPP</b>	Friction Ridge Detail <b><u>Was Not</u></b> Developed	Friction Ridge Detail <b><u>Was</u></b> Developed – See Electronically Captured Image	Friction Ridge Detail <b><u>Was</u></b> Developed – See Electronically Captured Image
	<b>8055O23620LPP</b>	Friction Ridge Detail <b><u>Was Not</u></b> Developed	Friction Ridge Detail <b><u>Was</u></b> Developed – See Electronically Captured Image	Friction Ridge Detail <b><u>Was</u></b> Developed – See Electronically Captured Image
	<b>8439R23620LPP</b>	Friction Ridge Detail <b><u>Was Not</u></b> Developed	Friction Ridge Detail <b><u>Was</u></b> Developed – See Electronically Captured Image	Friction Ridge Detail <b><u>Was</u></b> Developed – See Electronically Captured Image
	<b>6875N23620LPP</b>	Friction Ridge Detail <b><u>Was Not</u></b> Developed	Friction Ridge Detail <b><u>Was</u></b> Developed – See Electronically Captured Image	Friction Ridge Detail <b><u>Was</u></b> Developed – See Electronically Captured Image
	<b>4603H23620LPP</b>	Friction Ridge Detail <b><u>Was Not</u></b> Developed	Friction Ridge Detail <b><u>Was</u></b> Developed – See Electronically Captured Image	Friction Ridge Detail <b><u>Was</u></b> Developed – See Electronically Captured Image



	<b>3070B23620LPP</b>	Friction Ridge Detail <b><u>Was Not</u></b> Developed	Friction Ridge Detail <b><u>Was</u></b> Developed – See Electronically Captured Image	Friction Ridge Detail <b><u>Was</u></b> Developed – See Electronically Captured Image
	<b>5085K23620LPP</b>	Friction Ridge Detail <b><u>Was Not</u></b> Developed	Friction Ridge Detail <b><u>Was</u></b> Developed – See Electronically Captured Image	Friction Ridge Detail <b><u>Was</u></b> Developed – See Electronically Captured Image
	<b>7852G23620LPP</b>	Friction Ridge Detail <b><u>Was Not</u></b> Developed	Friction Ridge Detail <b><u>Was</u></b> Developed – See Electronically Captured Image	Friction Ridge Detail <b><u>Was</u></b> Developed – See Electronically Captured Image
	<b>3871X23620LPP</b>	Friction Ridge Detail <b><u>Was Not</u></b> Developed	Friction Ridge Detail <b><u>Was</u></b> Developed – See Electronically Captured Image	Friction Ridge Detail <b><u>Was</u></b> Developed – See Electronically Captured Image
	<b>8499G23620LPP</b>	Friction Ridge Detail <b><u>Was</u></b> Developed – See Electronically Captured Image	Friction Ridge Detail <b><u>Was</u></b> Developed – See Electronically Captured Image	Friction Ridge Detail <b><u>Was</u></b> Developed – See Electronically Captured Image
	<b>1849C23620LPP</b>	Friction Ridge Detail <b><u>Was Not</u></b> Developed	Friction Ridge Detail <b><u>Was</u></b> Developed – See Electronically Captured Image	Friction Ridge Detail <b><u>Was</u></b> Developed – See Electronically Captured Image
	<b>8603W23620LPP</b>	Friction Ridge Detail <b><u>Was Not</u></b> Developed	Friction Ridge Detail <b><u>Was</u></b> Developed – See Electronically Captured Image	Friction Ridge Detail <b><u>Was</u></b> Developed – See Electronically Captured Image
	<b>3285O23620LPP</b>	Friction Ridge Detail <b><u>Was Not</u></b> Developed	Friction Ridge Detail <b><u>Was</u></b> Developed – See Electronically Captured Image	Friction Ridge Detail <b><u>Was</u></b> Developed – See Electronically Captured Image
	<b>4615K23620LPP</b>	Friction Ridge Detail <b><u>Was Not</u></b> Developed	Friction Ridge Detail <b><u>Was</u></b> Developed – See Electronically Captured Image	Friction Ridge Detail <b><u>Was</u></b> Developed – See Electronically Captured Image
	<b>8215J23620LPP</b>	Friction Ridge Detail <b><u>Was Not</u></b> Developed	Friction Ridge Detail <b><u>Was</u></b> Developed – See Electronically Captured Image	Friction Ridge Detail <b><u>Was</u></b> Developed – See Electronically Captured Image
	<b>782J23620LPP</b>	Friction Ridge Detail <b><u>Was Not</u></b> Developed	Friction Ridge Detail <b><u>Was</u></b> Developed – See Electronically Captured Image	Friction Ridge Detail <b><u>Was</u></b> Developed – See Electronically Captured Image
	<b>6925Z23620LPP</b>	Friction Ridge Detail <b><u>Was Not</u></b> Developed	Friction Ridge Detail <b><u>Was</u></b> Developed – See Electronically Captured Image	Friction Ridge Detail <b><u>Was</u></b> Developed – See Electronically Captured Image



	<b>1535R23620LPP</b>	Friction Ridge Detail <b><u>Was Not</u></b> Developed	Friction Ridge Detail <b><u>Was</u></b> Developed – See Electronically Captured Image	Friction Ridge Detail <b><u>Was</u></b> Developed – See Electronically Captured Image
	<b>4173N23620LPP</b>	Friction Ridge Detail <b><u>Was Not</u></b> Developed	Friction Ridge Detail <b><u>Was</u></b> Developed – See Electronically Captured Image	Friction Ridge Detail <b><u>Was</u></b> Developed – See Electronically Captured Image
	<b>300G23620LPP</b>	Friction Ridge Detail <b><u>Was Not</u></b> Developed	Friction Ridge Detail <b><u>Was</u></b> Developed – See Electronically Captured Image	Friction Ridge Detail <b><u>Was</u></b> Developed – See Electronically Captured Image
	<b>7718N23620LPP</b>	Friction Ridge Detail <b><u>Was Not</u></b> Developed	Friction Ridge Detail <b><u>Was</u></b> Developed – See Electronically Captured Image	Friction Ridge Detail <b><u>Was</u></b> Developed – See Electronically Captured Image
	<b>1137E23620LPP</b>	Friction Ridge Detail <b><u>Was Not</u></b> Developed	Friction Ridge Detail <b><u>Was</u></b> Developed – See Electronically Captured Image	Friction Ridge Detail <b><u>Was</u></b> Developed – See Electronically Captured Image
	<b>2401T23620LPP</b>	Friction Ridge Detail <b><u>Was Not</u></b> Developed	Friction Ridge Detail <b><u>Was</u></b> Developed – See Electronically Captured Image	Friction Ridge Detail <b><u>Was</u></b> Developed – See Electronically Captured Image
	<b>6662I23620LPP</b>	Friction Ridge Detail <b><u>Was Not</u></b> Developed	Friction Ridge Detail <b><u>Was</u></b> Developed – See Electronically Captured Image	Friction Ridge Detail <b><u>Was</u></b> Developed – See Electronically Captured Image
	<b>9575Q23620LPP</b>	Friction Ridge Detail <b><u>Was Not</u></b> Developed	Friction Ridge Detail <b><u>Was</u></b> Developed – See Electronically Captured Image	Friction Ridge Detail <b><u>Was</u></b> Developed – See Electronically Captured Image
	<b>3562B23620LPP</b>	Friction Ridge Detail <b><u>Was Not</u></b> Developed	Friction Ridge Detail <b><u>Was</u></b> Developed – See Electronically Captured Image	Friction Ridge Detail <b><u>Was</u></b> Developed – See Electronically Captured Image
	<b>8172F23620LPP</b>	Friction Ridge Detail <b><u>Was Not</u></b> Developed	Friction Ridge Detail <b><u>Was</u></b> Developed – See Electronically Captured Image	Friction Ridge Detail <b><u>Was</u></b> Developed – See Electronically Captured Image
	<b>4078T23620LPP</b>	Friction Ridge Detail <b><u>Was Not</u></b> Developed	Friction Ridge Detail <b><u>Was</u></b> Developed – See Electronically Captured Image	Friction Ridge Detail <b><u>Was</u></b> Developed – See Electronically Captured Image
	<b>3847W23620LPP</b>	Friction Ridge Detail <b><u>Was Not</u></b> Developed	Friction Ridge Detail <b><u>Was</u></b> Developed – See Electronically Captured Image	Friction Ridge Detail <b><u>Was</u></b> Developed – See Electronically Captured Image

	<b>624I23620LPP</b>	Friction Ridge Detail <b>Was Not</b> Developed	Friction Ridge Detail <b>Was</b> Developed – See Electronically Captured Image	Friction Ridge Detail <b>Was</b> Developed – See Electronically Captured Image
	<b>5408O23620LPP</b>	Friction Ridge Detail <b>Was Not</b> Developed	Friction Ridge Detail <b>Was</b> Developed – See Electronically Captured Image	Friction Ridge Detail <b>Was</b> Developed – See Electronically Captured Image
	<b>8945P23620LPP</b>	Friction Ridge Detail <b>Was Not</b> Developed	Friction Ridge Detail <b>Was</b> Developed – See Electronically Captured Image	Friction Ridge Detail <b>Was</b> Developed – See Electronically Captured Image
	<b>637W23620LPP</b>	Friction Ridge Detail <b>Was Not</b> Developed	Friction Ridge Detail <b>Was</b> Developed – See Electronically Captured Image	Friction Ridge Detail <b>Was</b> Developed – See Electronically Captured Image

### Totals

Item #	Item #1	Item #2	Item #3
<b>Assigned Values</b>	Friction Ridge Detail <b>Was Not</b> Developed	Friction Ridge Detail <b>Was</b> Developed – See Electronically Captured Image	Friction Ridge Detail <b>Was</b> Developed – See Electronically Captured Image
<b>Consistent Responses</b>	<b>84</b>	<b>85</b>	<b>85</b>
<b>Inconsistent Responses</b>	<b>1</b>	<b>0</b>	<b>0</b>
<b>Percentage of Consistent Responses</b>	<b>99%</b>	<b>100%</b>	<b>100%</b>

### Participant's Additional Comments

Test ID	Comments
<b>6133V23620LPP</b>	UTILICE POLVOS FISICOS VOLCANICO DE COLOR NEGRO.
<b>1167F23620LPP</b>	FOR THE DEVELOPMENT OF THE TEST BEFORE USING ANY TYPE OF POWDER ON THE ITEMS TO DEVELOP, A WHITE LIGHT LAMP IS USED TO VISUALIZE EACH OF THE OBJECTS AND DETECT POSSIBLE PRINTS, AFTER THAT, BASED ON THE PROCEDURE FOR LOFOSCOPIC FRAGMENTS CC-O-P-08, BROWN MAGNETIC POWDERS ARE USED FOR ITEM #2 AND ITEM #3, WITHIN THE PROCESS OF THE TEST THE PRINT IS DEVELOPED, PHOTOGRAPHIC FIXATION AND COLLECTION OF THE PRINT IN ACETATE.
<b>9881D23620LPP</b>	FOR THE DEVELOPMENT OF THE TEST BEFORE USING ANY TYPE OF POWDER ON THE ITEMS TO DEVELOP, A WHITE LIGHT LAMP IS USED TO VISUALIZE EACH OF THE OBJECTS AND DETECT POSSIBLE PRINTS, AFTER THAT, BASED ON THE PROCEDURE FOR

	<p>LOFOSCOPIC FRAGMENTS CC-O-P-08, BLACK MAGNETIC POWDERS ARE USED FOR ITEM #2 AND ITEM #3, WITHIN THE PROCESS OF THE TEST THE PRINT IS DEVELOPED, PHOTOGRAPHIC FIXATION AND COLLECTION OF THE PRINT IN ACETATE.</p> <p>NOTE: ITEM #2 WAS NOT FOUND TO BE FASTENED WITH THE PLASTIC TIE OF THE PACKAGING.</p>
<b>8772L23620LPP</b>	<p>FOR THE DEVELOPMENT OF THE TEST BEFORE USING ANY TYPE OF POWDER ON THE ITEMS TO DEVELOP, A WHITE LIGHT LAMP IS USED TO VISUALIZE EACH ONE OF THE OBJECTS AND DETECT POSSIBLE FINGERPRINTS, AFTER THAT, BASED ON THE PROCEDURE FOR LOFOSOPIC FRAGMENTS CC-O-P-08, GRAY MAGNETIC POWDERS ARE USED FOR ITEM #2 AND BLACK VOLCANIC POWDERS FOR ITEM #3, WITHIN THE PROCESS OF THE TEST THE PRINT IS DEVELOPED, PHOTOGRAPHIC FIXATION AND COLLECTION OF THE PRINT IN ACETATE.</p> <p>NOTE: ITEM #2 WAS NOT FASTENED WITH THE BLACK PLASTIC TIE FROM THE PACKAGING.</p>
<b>6968B23620LPP</b>	<p>FOR THE DEVELOPMENT OF THE TEST, BEFORE USING ANY TYPE OF POWDER ON THE ITEMS TO DEVELOP, A WHITE LIGHT LAMP IS USED TO VISUALIZE EACH OF THE OBJECTS AND DETECT POSSIBLE FINGERPRINTS. AFTER THAT, BASED ON THE PROCEDURE FOR LOFOSOPIC FRAGMENTS CC-O-P-08, GRAY MAGNETIC POWDERS ARE USED FOR ITEM #2 AND #3, WITHIN THE PROCESS OF THE TEST THE FINGERPRINT IS DEVELOPED, PHOTOGRAPHIC FIXATION AND COLLECTION OF THE FINGERPRINT IN ACETATE.</p> <p>NOTE: ITEM #2 WAS NOT FASTENED TO THE PLASTIC TIE OF THE PACKAGING.</p>
<b>5568J23620LPP</b>	<p>The demographic survey in the box had different questions than the portal. The box survey had crime scene specific questions whereas the portal asked latent specific questions.</p>
<b>8797X23620LPP</b>	<p>I superglue fumed all items for 18 minutes before using black powder on the items to search for possible latent prints. I located one print on item 2 and one print on items 3. I photographed the items with black powder showing the prints before lifting the prints from the items with lifting tape. Photos of the print lifts are also included with my submission.</p>
<b>8499G23620LPP</b>	<p>Puedo indicar que, este tipo de prueba es un experiencia más de lo que cada día realizamos en el campo y en este caso considero que fue una experiencia satisfactoria y esto se debe a que se aplicaron los procedimientos estandarizados para la obtención del presente resultado.</p> <p>es importante mencionar que, procedió a realizar el armado de la cámara portátil para vaporizado de cianoacrilato y se introdujeron los siguientes ítems No.1, No.2 y No.3. Luego se realizó la aplicación de polvos reactivos de color negro en cada uno estos indicios, de los cuales se obtuvieron resultados en los ítems No.2 y No.3, mas no en el ítem NO.1.</p>
<b>4615K23620LPP</b>	<p>It would be nice to have a statement up front regarding the REQUIREMENT to photo/lift the impression. The instructions were buried with a simple reference to the examiner's choice of lift upload.</p>
<b>2401T23620LPP</b>	<p>As a suggestion, it could be improved in terms of providing items of different dimensions, that is, adding some larger ones.</p>

## **Manufacturer's Additional Observations**

Based upon a review of the submitted responses, the following observations were noted:

1. There are no additional observations.

**Authorized by:** Jon S. Byrd, CEO  
**Date of Issue:** October 10, 2023